

# ***LEWISTON AMBULANCE 2024 ANNUAL REPORT***



**ONE MISSION. ONE TEAM.**

## 2024 Statistics

The Lewiston Ambulance finished 2024 with 334 total incidents. Contact was made with 326 patients, the remainder we either found no patient, were cancelled prior to our arrival, or we were on standby only. 2024 showed a decrease in call volume by 36 incidents compared to 2023. This is due to the work being done in St. Charles and their crew handling more volume (399 in 2024 compared to 346 in 2023). Overall, between both the Lewiston Ambulance & St. Charles Ambulance we responded to 733 incidents (+17 compared to 2023).

39 of our 334 incidents were mutual aid requests (-64 compared to 2023), and from the time of dispatch until completion of the run volunteers were gone an average of one hour and thirty-two minutes (1:32). In most instances we responded to the scene emergent with lights and sirens, but were able to leave the scene non-emergent without lights and sirens. We made contact with 158 female patients and 168 male patients with the average age being 65 years old. We were dispatched for multiple reasons. The top 3 dispatch reasons were falls (65), sick person (47), and traffic crashes (43).

Patients were transported to numerous hospitals in our area. 135 patients were transported to Winona Health, 71 to St. Mary's-Rochester, 26 to Gundersen Lutheran-La Crosse, 5 to Olmsted Medical Center-Rochester, and 1 to MCHS- La Crosse; the others either refused transport or required no treatment. Advanced Life Support was required for 29 patients (+10 from 2023). 25 patients's required a ground ALS Intercept from either Winona, Tri-State or Mayo Clinic Ambulance. Four patients were flown by Mayo One & 1 patient by Gundersen Air.

The summary of calls by shift showed 45% of our calls during the daytime hours of Monday through Friday (6am-6pm), 30% on the weekends (Friday 1800 to Monday 0600), and 25% during the evening (Monday to Thursday 1800-0600).

Our membership currently consists of 1 Paramedic, 28 Emergency Medical Technicians, and 4 Emergency Medical Responders. Our team continues to be strong and committed. We continue to actively recruit and share our story with the public. We currently have 12 members who serve on both the Ambulance & Fire Dept, and we are proud of the relationship between the services. We also have 8 members who do not live near Lewiston. These members stay in our Ambulance Office for 12 or 24 hour shifts when taking call time. Over 24,000 hours of "call time" were provided by our members in 2024. This does not include the hours spent teaching, training, attending meetings, or staffing our 2<sup>nd</sup> Truck.



## Training Program continues to Strive

Our education program continued to be a success in 2024. We conducted an Emergency Medical Responder (EMR) course at our local high school during the 4<sup>th</sup> Quarter. This class has been taught since 2012. Our primary goal is to connect with students and make them realize how important it is to volunteer in their local community whether that be in EMS or any volunteer opportunity. There were 17 students who completed our class with 10 students going above and beyond to obtain their State of MN EMR certification. We also conducted an Initial EMR course for other departments and certified 10 students who will be joining area departments in the County. We also conducted an EMR renewal course for the St. Charles Police Department and recertified 7 of their Officers. Our EMR program is a success due to the members of our Ambulance who commit to teaching classes on top of responding to calls. We also continued to teach CPR & First Aid throughout 2024. We conducted classes at our local school, trained numerous day care providers and provided classes for teachers at Lewiston-Altura & St. John's.



## Lewiston Ambulance Awarded \$45,000 from 2 Grants in 2024!



The service applied for multiple grants throughout the year and we were fortunate to be awarded over \$45,000 in funding. Special thanks to our CEDA Representative, Ms. Liston, who assisted us with the applications. We received a \$15,000 grant from the Taylor Family Farms Foundation that we used to purchase a new Lucas 3 CPR assist device. This new device will be placed on our primary truck with the older unit moving to our back-up truck. The total project cost around \$21,000 and would not have been possible without the help of the foundation. We also applied for funding through the Department of Public Safety for new communication equipment. We were

awarded \$30,000 that was put towards the purchase of 10 new APX 4000 portable radios. These new radios will replace some of our 16 year old models and help enhance communication within the City!



## 2024 EMS Week Theme: “Honoring our Past, Forging Our Future”

The theme was chosen to recognize the work of the pioneers who established EMS and to encourage future generations to continue their work with the same drive and tenacity. The theme also served as a reminder to build on the foundation of those who came before us. The Lewiston Ambulance celebrated 50 years of existence in 2024! We held our annual EMS Week Open House on May 19<sup>th</sup>. The weather was perfect and the community came out in full force! We had a brat/hot dog meal, games for the kids, and the community was able to meet the crew. It was a great opportunity to thank our current members, but to also thank those who served before us! We are planning an open house in 2025 which will be on Wednesday May 21<sup>st</sup>.



**“There is no higher honor than to be given the responsibility to care for another human being”---**  
**Richard K. Schachern**

2024 continued to be a year of training for the members of the Ambulance. We belong to the SE EMS Consortium and receive multiple trainings a year along with Medical Direction from Dr. Dennis Laudon. Our consortium instructor is a Paramedic with Mayo Clinic Ambulance. In addition our own employee, Miranda Schell, is a Paramedic and has planned our in-service trainings so members are getting the best education possible. In May, we held a joint training with Lewiston PD & Fire which involved a Mass Casualty Incident/Search & Rescue. In June, we held our first small group simulation event. Scenarios consisted of a cardiac arrest, diabetic emergency, and toxicological emergency. Members traveled to different locations and interacted with either live simulated patients or performed skills on a manikin. Each station was observed by a proctor who provided information and then feedback to the crews on how they performed. We had some outstanding EMS Physicians & Providers proctor our scenarios. In July, we had a visit from the Mayo One Flight Crew who provided education on the services they offer and education on safe operations around the helicopter. We ended the year by getting trained on new medications we are now stocking on the trucks. We will continue to improve our skills in 2025 so that we are providing the best care possible to our community!



## Lewiston Ambulance engages with Community

We had the opportunity to attend multiple public relation events in 2024! These events give us a chance to interact with the community outside of an emergency and members enjoy this opportunity. Throughout the year we were able to work at the high school teaching students in CPR and EMR. We hosted the Cub Scouts at the station. We provided EMS Standby coverage for the annual Fool's Five event, Family Night on the Farm, Winona County Fair, and the high school football games. We were able to attend Farm Safety Day in May. We participated in the annual Heartland Day's Parade in June. We staffed a booth throughout the summer at the weekly Crossing's Center Farmer's Market. In July, we were able to attend Public Safety Day at the Winona County Fair. In August we attended the National Night Out Event organized by the Lewiston Police Department. We finished out the year by sponsoring a "BINGO" night at the Lewiston Senior Living & Speltz Estates Assisted Living, assisting the Police Department with the Bluff Country Hidden Heroes program, and participating in the Lewiston Holiday Parade. We plan to stay active in 2025 so we can continue to engage with the community!



**Lewiston Ambulance continues collaboration with St. Charles Ambulance**

This collaboration is now entering its 3<sup>rd</sup> full year and we continue to see benefits by working together. We have 62 members in total between the two services with 2 full-time employees, 3 part-time employees and 57 volunteers. In the fall of 2024 the services started discussions on what a joint service would look like in the future. Members from both services agree there may be obstacles, but working together will likely provide the most sustainable model for both communities. We will continue to discuss and research throughout 2025 with our goal to continue providing high quality prehospital care to residents in our communities!



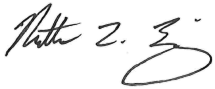
**SE MN Emergency Medical Services Presents Lifesaver Awards**

On October 30, 2024 Lewiston Minnesota Police Department & Lewiston Ambulance were dispatched for an unresponsive female patient in her 30's. En-route to the scene, dispatch advised that CPR was in progress. On Wednesday evening December 11, 2024 at the City of Lewiston council meeting, we were able to recognize a community member along with our public safety professionals for saving the life of Breeanna. We don't always do a great job of celebrating the victories in EMS for various reasons. Ultimately, Breeanna was able to come home 10 days after this incident because the system did exactly what it was meant to do! Special thanks to our entire Lewiston team who continue to push each other to provide the best care possible for our community! One Mission. One Team!



Lewiston Ambulance has some of the most dedicated volunteers you will find. These men and women volunteer thousands of hours a year to be “on call”, take mandatory and additional training classes, and then respond to calls. The American Ambulance Association estimates that it costs around 1 million dollars a year to run 1 Ambulance 24/7/365. The volunteers save the taxpayers roughly \$500,000 every year just in wages. They leave their family at a moment’s notice to help someone else and ask for nothing in return. We are very thankful for all the support the Lewiston City Council, Township Officials, and the community gives us. We will continue to improve this great service that was started 51 years ago and although we hope you never need us, rest assured we will be there if you do!

Submitted,



Matthew L. Essig  
Ambulance Director  
[messig@lewistonmn.gov](mailto:messig@lewistonmn.gov)  
507-523-2982



**Lewiston**  
**XEMS**  
**One Mission. One Team**



2024 INCIDENT STATISTICS

LEWISTON AMBULANCE

<b>2024 TOTAL AMBULANCE RUNS</b>	<b>334</b>
<b>POSSIBLE PATIENT CONTACTS</b>	<b>369</b>
<b>ACTUAL PATIENT CONTACTS</b>	<b>326</b>

<b>RUNS BY CITY/TOWNSHIP LOCATION</b>	
City of Lewiston	142
City of Stockton	48
Utica Township	34
Warren Township	29
Fremont Township	20
City of St. Charles	19
City of Utica	11
City of Winona	8
Hillsdale Township	7
Norton Township	3
City of Rollingstone	2
Hart Township	2
St. Charles Township	1
Saratoga Township	1
Elba Township	1
City of Altura	1
City of Goodview	1
City of Rochester	1
Wilson Township	1
City of Elba	1

<b>PATIENT DEMOGRAPHICS</b>	
Number of Female Patient's	158
Number of Male Patient's	168
<b>Age of Patient's</b>	
Less than 1	0
1-4	1
5-9	4
10-14	6
15-19	21
20-24	12
25-34	24
35-44	23
45-54	29
55-64	44
65-74	58
75-84	61
85-94	39
95+	4

<b>TIME FROM DISPATCH UNTIL EN-ROUTE</b>
Overall: 4.4 Minutes
Day Shift: 3.5 Minutes
Night Shift: 5.8 Minutes
Weekend Shift: 4.7 Minutes

<b>TIME FROM DISPATCH UNTIL ON SCENE (OUR PSA)</b>
Overall: 9.7 Minutes
Day Shift: 8.1 Minutes
Night Shift: 11.9 Minutes
Weekend Shift: 10.04 Minutes

<b>AVG. MINUTES ON SCENE UNTIL TRANSPORT</b>
Overall: 17.7 Minutes
Day Shift: 16 Minutes
Night Shift: 19.3 Minutes
Weekend Shift: 19 Minutes

<b>AGENCIES RESPONDING WITH US</b>	
Lewiston Police Department	111
Winona County Sheriff's Department	81
Lewiston Fire/Rescue	50
Minnesota State Patrol	31
St. Charles Police Department	16
St. Charles Fire & Rescue	14
Lewiston 800	14
Winona Ambulance	9
Stockton FR	9
Rollingstone First Responders	5
Winona Fire & Rescue	4
Winona Co EM	4
St. Charles Ambulance	3
Winona Police Dept.	3
Goodview Police Department	2
Wilson Fire Dept.	2
Goodview First Responders	1
Wilson First Response	1
Winona Co SOAR	1

2024 INCIDENT STATISTICS

LEWISTON AMBULANCE

PATIENT DESTINATIONS	
Winona Health	135
St. Mary's Hospital	71
Refused Care/Transport	55
Cancelled	25
Gundersen Lutheran, La Crosse	26
Standby Only	17
Treat/Transport by Private Vehicle	14
Deceased at Scene	8
Refused Transport (AMA)	6
Olmsted Medical Center	5
Helicopter Transport	2
MCHS-La Crosse	1
Referred to PD	1
Private Residence	1
No Patient	1
ALS Transported	1
Rochester Methodist	0

ALS INTERCEPTS	
Winona Ambulance	15
Mayo Clinic Ambulance	9
Mayo One Helicopter	3
Gundersen Air Helicopter	1
Tristate Ambulance	1

AVERAGE CALL TIME: 1 HOUR & 32 MINUTES	
Day Shift (Monday- Friday 6am-6pm)	151 Calls
Evening Shift (Monday- Thursday 6pm-6am)	83 Calls
Weekend Shift (Friday 6pm- Monday 6am)	100 Calls

RESPONSE MODES	
LIGHTS & SIRENS	123
NO LIGHTS & SIRENS	190
INITIAL EMERGENT, DOWNGRADED	27
INITIAL NONEMERGENT, UPGRADED	0

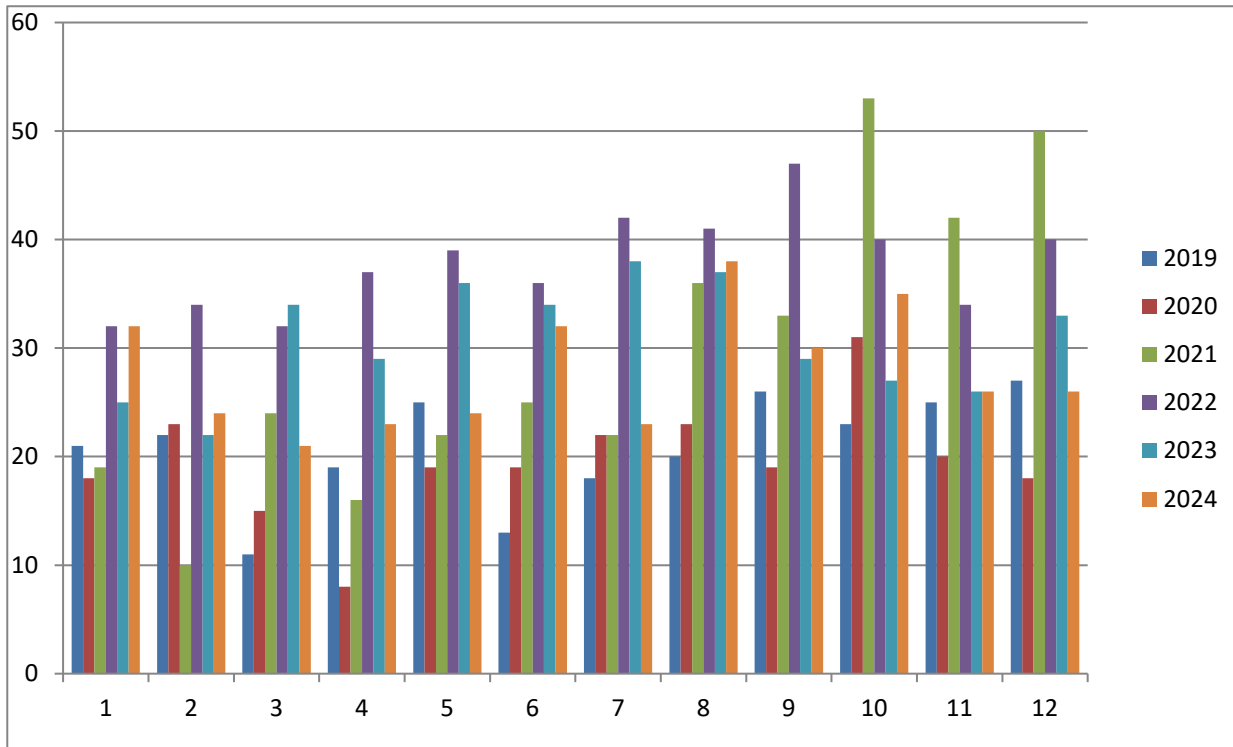
DISPATCH REASONS	
Falls	65
Sick Person	47
Traffic/Transportation Crashes	43
Chest Pain (non-traumatic)	19
Abdominal Pain/Problems	15
Event Standby	15
Altered Mental Status	12
Unknown Problem/Person Down	10
Hemorrhage/Laceration	10
Psychiatric Problem/Suicide Attempt	9
Unconscious/Fainting	9
Medical Alarm	8
Breathing Problem	8
Stroke	7
Convulsions/Seizure	7
Back Pain (non-traumatic)	6
Traumatic Injury	6
Heart Problems	6
Diabetic Problem	5
Overdose/Poisoning/Ingestion	5
Vomiting	3
Cardiac Arrest/Death	3
Well Person Check	3
Allergic Reaction/Stings	3
Headache	3
Fire Standby	2
Nausea	1
Assault/Battery/Abuse Victim	1
Heat/Cold Exposure	1
Stab/Gun Shot/ Penetrating Injury	1
Interfacility Transfer	1

STAFFING CHANGES	
Members on January 1, 2024	33
Members on December 31, 2024	33

Lewiston Ambulance Report  
01/01/2024-12/31/2024

	2019	2020	2021	2022	2023	2024	Month Avg	Patients
January	21	18	19	32	25	32	24.50	32
February	22	23	10	34	22	24	22.50	24
March	11	15	24	32	34	21	22.83	23
April	19	8	16	37	29	23	22.00	20
May	25	19	22	39	36	24	27.50	26
June	13	19	25	36	34	32	26.50	33
July	18	22	22	42	38	23	27.50	20
August	20	23	36	41	37	38	32.50	32
September	26	19	33	47	29	30	30.67	30
October	23	31	53	40	27	35	34.83	30
November	25	20	42	34	26	26	28.83	31
December	27	18	50	40	33	26	32.33	25
<b>Total Runs</b>	250	235	352	454	370	334		326
<b>Mid Year (June 30th)</b>	111	102	116	210	180	156		
<b>Monthly Avg</b>	20.8	19.6	29.3	37.8	30.8	27.8		

**AMBULANCE RUNS BY MONTH**

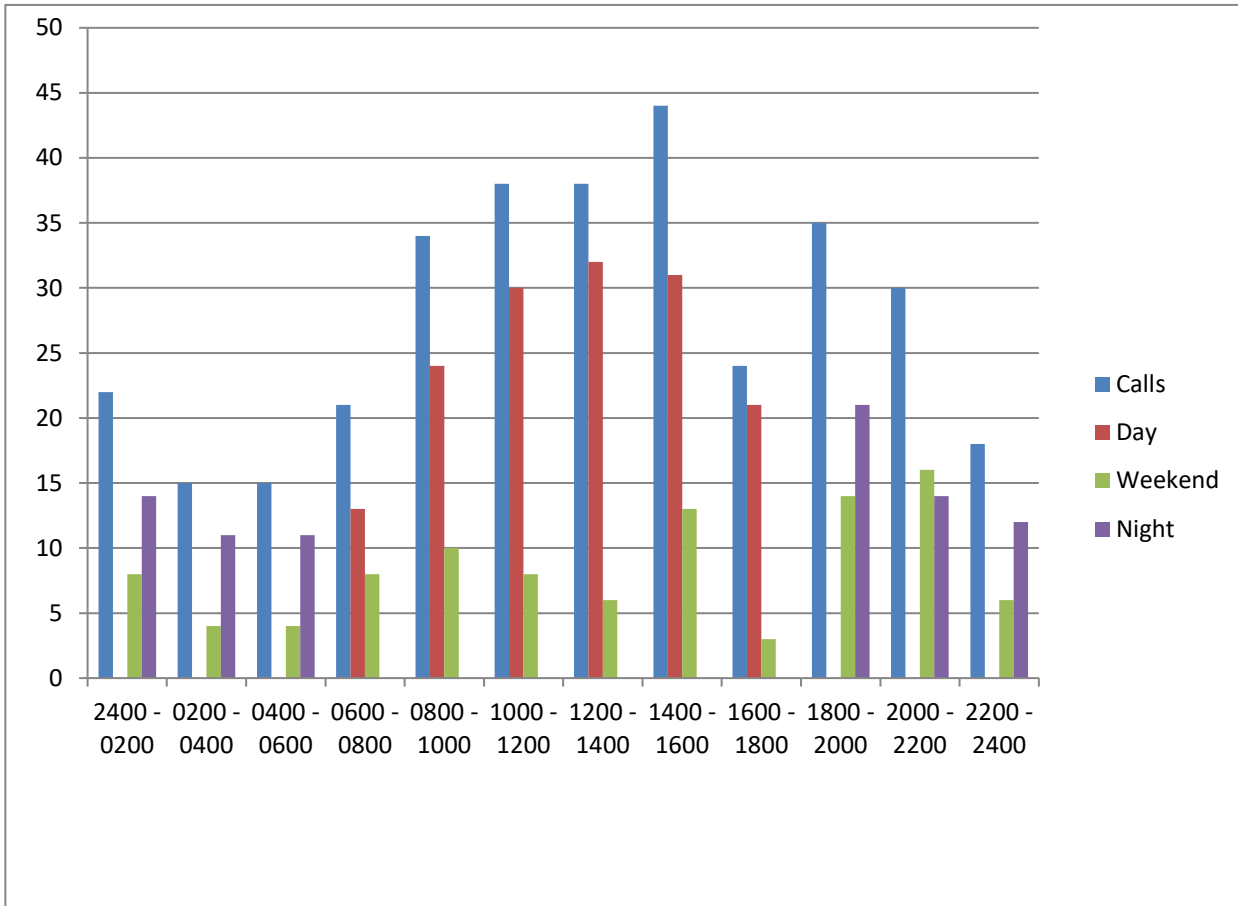


Lewiston Ambulance Report  
01/01/2024-12/31/2024

Times	Calls	Day	Weekend	Night	Patients
2400 - 0200	22		8	14	19
0200 - 0400	15		4	11	14
0400 - 0600	15		4	11	14
0600 - 0800	21	13	8		20
0800 - 1000	34	24	10		34
1000 - 1200	38	30	8		37
1200 - 1400	38	32	6		45
1400 - 1600	44	31	13		46
1600 - 1800	24	21	3		19
1800 - 2000	35		14	21	32
2000 - 2200	30		16	14	28
2200 - 2400	18		6	12	18
	<b>334</b>	<b>151</b>	<b>100</b>	<b>83</b>	<b>326</b>

45% of Calls During Day  
30% of Calls During Weekend  
25% of Calls During Night

**CALLS BY TIME**



2024 MUTUAL AID STATISTICS  
LEWISTON AMBULANCE

**MUTUAL AID RESPONSES (ST. CHARLES PSA)** (-53 COMPARED TO 2023)

SHIFT	TOTAL CALLS
DAY (0600-1800 MONDAY-FRIDAY)	11
EVENING (1800-0600 MONDAY-THURSDAY)	1
WEEKEND (FRIDAY 1800 TO MONDAY 0600)	10
<b>TOTAL</b>	<b>22</b>

PATIENT DISPOSITIONS	TOTAL
CANCELLED	3
DOA	0
NO LOAD	6
STANDBY (EVENT)	1
HELICOPTER TRANSPORT	0
ALS GROUND INTERCEPT	1
TREATED, TRANSPORTED BY LEWISTON	16
<b>TOTAL</b>	<b>27</b>
21 OF 22 RESPONSES SC TRUCK ALREADY ON A CALL	
1 OF 22 RESPONSES NO SC TRUCK STAFFED	

**MUTUAL AID RESPONSES (WAAS PSA)** (-10 COMPARED TO 2023)

SHIFT	TOTAL CALLS
DAY (0600-1800 MONDAY-FRIDAY)	4
EVENING (1800-0600 MONDAY-THURSDAY)	6
WEEKEND (FRIDAY 1800 TO MONDAY 0600)	2
<b>TOTAL</b>	<b>12</b>

PATIENT DISPOSITIONS	TOTAL
CANCELLED	3
NO LOAD	1
STANDBY (PROVIDE EMS COVERAGE)	0
TREATED, TRANSPORTED BY LEWISTON	10
<b>TOTAL</b>	<b>14</b>

**MUTUAL AID RESPONSES (ALTURA PSA)** (-1 COMPARED TO 2023)

SHIFT	TOTAL CALLS
DAY (0600-1800 MONDAY-FRIDAY)	4
EVENING (1800-0600 MONDAY-THURSDAY)	1
WEEKEND (FRIDAY 1800 TO MONDAY 0600)	0
<b>TOTAL</b>	<b>5</b>

PATIENT DISPOSITIONS	TOTAL
CANCELLED	1
NO LOAD	2
TREATED, TRANSPORTED BY LEWISTON	2
<b>TOTAL</b>	<b>5</b>

**TOTAL 2024 MUTUAL AID RESPONSES= 39** (-64 COMPARED TO 2023)

**Lewiston Ambulance Truck #2 Annual Report (2024)**

<b>2024</b>	<b># of applicable calls</b>	<b># of times 2nd truck was available</b>	<b>Staffing rate</b>	<b>2nd truck dispatched</b>	<b>2ND TRUCK TRANSPORTS</b>
January	30	21	70.00%	3	2
February	16	9	56.00%	1	0
March	21	14	67.00%	1	1
April	21	16	76.00%	3	0
May	23	15	65.00%	2	0
June	29	19	65.00%	3	2
July	22	10	45.00%	2	0
August	37	16	43.00%	1	0
September	9	4	44.00%	1	0
October	34	14	41.00%	2	0
November	24	12	50.00%	3	0
December	1	1	100.00%	0	0
<b>Total # of applicable runs</b>	<b>267</b>	<b>151</b>	<b>57.00%</b>	<b>22</b>	<b>5</b>

**Total Incidents Truck #2 Dispatched= 22**

**Total Patients Transported= 5**

**2024 Notes: (Truck 810 purchased 7/7/2022)**

January= Truck 1 out of service for 7 days. Truck 2 becomes primary

April= Truck 1 out of service for 4 days. Truck 2 becomes primary

May= SC Ambulance assists with 1 mutual aid call in Lewiston (no 2nd truck staff)

September= Truck 2 placed in SC as their primary unit due to vehicle breakdowns (9/12-9/30)

October= SC Ambulance assists with 2 mutual aid calls in Lewiston (no 2nd truck staff)

December= Lewiston Truck 1 goes for paint warranty work. Truck 2 becomes primary (12/2/24-1/15/25)

**2nd Truck Staffing Rate: 57%**



FINANCIAL REPORTS  
202-Lewiston Ambulance

<u>Code</u>	<u>EXPENSE</u>	<u>2024 Budget</u>	<u>2024 Actual (not audited)</u>	<u>2025 Budget</u>
101	Full Time Employee +11% Admin Assitant	\$ 91,366.81	\$ 93,243.12	\$ 99,927.25
103	Part-Time EMT/Admin Assist	\$ 22,961.28	\$ 19,432.28	\$ 28,845.97
110	Volunteer Payroll	\$ 67,000.00	\$ 67,951.00	\$ 77,000.00
121	PERA	\$ 8,574.61	\$ 8,545.20	\$ 9,657.99
122	FICA	\$ 11,242.34	\$ 11,426.08	\$ 12,757.94
126	Medicare	\$ 2,629.26	\$ 2,672.19	\$ 2,983.71
131	Employ Pd Health	\$ 14,810.51	\$ 14,469.47	\$ 15,459.19
132	Employ Pd. Life Insurance	\$ 165.53	\$ 180.80	\$ 269.20
151	Worker Compensation	\$ 12,178.98	\$ 10,644.15	\$ 8,694.45
154	Safety Training &Supplies	\$ -	\$ -	\$ -
155	Uniform Expense	\$ 5,000.00	\$ 4,916.49	\$ 5,000.00
200	Office Supplies	\$ 300.00	\$ -	\$ 300.00
210	Operating Supplies	\$ 10,000.00	\$ 7,916.28	\$ 9,500.00
212	Motor Fuels	\$ 8,000.00	\$ 5,023.19	\$ 7,000.00
214	Oxygen	\$ 3,000.00	\$ 3,217.64	\$ 3,000.00
220	Repair & Maint. Supplies	\$ -	\$ 83.31	\$ -
250	Merchandise Resale	\$ 500.00	\$ -	\$ -
301	Audit and Accounting	\$ 1,400.00	\$ 1,400.00	\$ 1,450.00
304	Legal Fees	\$ 500.00	\$ 5,511.45	\$ 500.00
315	Outside Services	\$ 11,000.00	\$ 7,953.82	\$ 10,500.00
317	Advanced Life Support	\$ 7,000.00	\$ 4,775.91	\$ 7,000.00
320	Communication	\$ 3,000.00	\$ 2,882.46	\$ 3,000.00
331	Conferences & Training	\$ 8,000.00	\$ 9,719.50	\$ 8,000.00
351	Publishing & Printing	\$ 500.00	\$ 468.73	\$ 45.00
361	General Liability Insurance	\$ -	\$ -	\$ -
362	Property Insurance	\$ -	\$ -	\$ -
363	Auto Insurance	\$ 1,341.90	\$ 477.00	\$ 1,353.00
380	Utility Service	\$ 2,500.00	\$ 1,176.26	\$ 2,500.00
400	Repair/Maint.	\$ 5,000.00	\$ 5,724.28	\$ 5,000.00
410	Rentals	\$ -	\$ -	\$ -
425	Uncollectible Accou	\$ -	\$ -	\$ -
430	Miscellaneous	\$ -	\$ -	\$ -
433	Dues and Subscriptions	\$ 600.00	\$ 668.41	\$ 600.00
437	Refunds and Reimb	\$ -	\$ 1,442.32	\$ -
438	Licenses, Permits	\$ 500.00	\$ 597.36	\$ 500.00
550	Motor Vehicles	\$ -	\$ -	\$ -
570	Office Equip and Furnishings	\$ -	\$ -	\$ -
580	Other Equipment	\$ -	\$ 25,347.50	\$ -
581	Communications Equipment	\$ 2,000.00	\$ 79.95	\$ 2,000.00
	<b>TOTALS</b>	<b>\$ 301,071.22</b>	<b>\$ 317,946.15</b>	<b>\$ 322,843.70</b>

FINANCIAL REPORTS  
202-Lewiston Ambulance

Code	REVENUE	2024 Budget	2024 Actual (not audited)	2025 Budget
31010	Lewiston Property Tax	\$ 81,751.21	\$ 81,751.21	\$ 82,185.73
31020	Delinquent Property Tax	\$ -		
33400	State Pays/Grants/Aids	\$ 3,000.00	\$ 22,875.00	\$ 6,900.00
34205	Run Revenue	\$ 180,000.00	\$ 184,768.74	\$ 185,000.00
34206	Township Contracts	\$ 25,720.00	\$ 27,676.00	\$ 36,008.00
34209	Training Program Rev.	\$ 10,000.00	\$ 5,885.00	\$ 12,000.00
36200	Mis. Revenue	\$ 250.00	\$ 500.00	\$ 250.00
36210	Interest	\$ 350.00	\$ 3,433.71	\$ 500.00
36201	Refunds & Reimburse	\$ -	\$ -	
36230	Donations	\$ -	\$ 1,000.00	
	<b>TOTALS</b>	<b>\$ 301,071.21</b>	<b>\$ 327,889.66</b>	<b>\$ 322,843.73</b>

Checking	\$0.00
MM Unassigned	\$54,000.00
MM Building	\$90,844.73
EMS Aid:	\$71,975.33
MM Truck	\$20,951.79
<b>Total:</b>	<b>\$237,771.85</b>

UPCOMING PROJECTS		
Building Project	Unknown??, Millions	Unknown timeline
Cardiac Monitors	\$80,000-\$120,000 (depends on brand)	Unknown timeline
Stretcher + Load for Truck 2	\$75,000	2030?
Lucas Device	\$20,000	Grant Awarded 2024
Truck 2 Replacement	5 years look at used market	2030?
Quick Response Vehicle	Look @ replacement in 1-3 years	2028?



FINANCIAL REPORTS  
212- ST. CHARLES DIVISION

<u>Code</u>	<u>EXPENSE</u>	<u>2024 Budget</u>	<u>2024 Actual (not audited)</u>	<u>2025 Budget</u>
101	Full Time Employee	\$ 54,085.24	\$ 39,666.58	\$ 48,361.03
102	FT Employee Overtime	\$ -	\$ 245.22	\$ -
103	Part-Time EMT Employees	\$ 46,472.00	\$ 38,779.05	\$ 50,674.70
110	Volunteer Payroll	\$ 75,000.00	\$ 66,777.80	\$ 82,000.00
121	PERA	\$ 7,541.79	\$ 5,835.61	\$ 7,427.68
122	FICA	\$ 10,884.55	\$ 9,283.20	\$ 11,224.22
126	Medicare	\$ 2,545.58	\$ 2,171.08	\$ 2,625.02
131	Employ Pd Health	\$ 13,342.80	\$ -	\$ 13,927.20
132	Employ Pd. Life Insurance	\$ 277.20	\$ 251.97	\$ 392.04
151	Worker Compensation	\$ 5,263.70	\$ 11,725.09	\$ 9,480.33
154	Safety Training &Supplies	\$ -	\$ -	\$ -
155	Uniform Expense	\$ -	\$ 4,260.00	\$ -
200	Office Supplies	\$ 300.00	\$ -	\$ 300.00
210	Operating Supplies	\$ 11,000.00	\$ 11,850.50	\$ 11,000.00
212	Motor Fuels	\$ 750.00	\$ 356.89	\$ 750.00
214	Oxygen	\$ 6,000.00	\$ 4,765.58	\$ 6,000.00
220	Repair & Maint. Supplies	\$ 1,000.00	\$ -	\$ 1,000.00
250	Merchandise Resale	\$ -		\$ -
301	Audit and Accounting	\$ -		\$ -
304	Legal Fees	\$ 2,500.00	\$ 671.25	\$ 2,500.00
315	Outside Services	\$ 8,000.00	\$ 7,664.50	\$ 8,000.00
317	Advanced Life Support	\$ 5,000.00	\$ 3,528.63	\$ 5,000.00
320	Communication	\$ -	\$ -	\$ -
331	Conferences & Training	\$ 8,000.00	\$ 4,225.13	\$ 11,000.00
351	Publishing & Printing	\$ 1,000.00	\$ -	\$ 1,000.00
361	General Liability Insurance	\$ -	\$ -	
362	Property Insurance	\$ -	\$ -	
363	Auto Insurance	\$ -	\$ -	
380	Utility Service	\$ -	\$ -	
400	Repair/Maint.	\$ -	\$ 390.73	
410	Rentals	\$ -	\$ -	
425	Uncollectible Accou	\$ -	\$ -	
430	Miscellaneous	\$ -	\$ -	
433	Dues and Subscriptions	\$ -	\$ 34.55	
437	Refunds and Reimb	\$ -	\$ 1,573.77	
438	Licenses, Permits	\$ -	\$ 449.36	
550	Motor Vehicles	\$ -	\$ -	
570	Office Equip and Furnishings	\$ -	\$ -	
580	Other Equipment	\$ -	\$ 848.43	
581	Communications Equipment	\$ -	\$ -	
	<b>TOTALS</b>	<b>\$ 258,962.86</b>	<b>\$ 215,354.92</b>	<b>\$ 272,662.22</b>

FINANCIAL REPORTS  
212- ST. CHARLES DIVISION

<b>Code</b>	<b>REVENUE</b>	<b>2024 Budget</b>	<b>2024 Actual (not audited)</b>	<b>2025 Budget</b>
33400	State Pays/Grants/Aids	\$ 2,000.00	\$ 1,500.00	\$ 8,750.00
34000	Charges for Services	\$ 106,000.00	\$ 97,666.31	\$ 110,240.00
34205	Run Revenue	\$ 175,000.00	\$ 232,871.95	\$ 175,000.00
34206	Township Contracts	\$ -	\$ -	\$ -
34209	Training Program Rev.	\$ -	\$ 25.00	\$ -
36200	Mis. Revenue	\$ -	\$ -	\$ -
36210	Interest	\$ -	\$ 1,583.27	\$ -
36201	Refunds & Reimburse	\$ -		\$ -
36230	Donations	\$ -		\$ -
	<b>TOTALS</b>	<b>\$ 283,000.00</b>	<b>\$ 333,646.53</b>	<b>\$ 293,990.00</b>

Checking	\$110,000.00
MM Unassigned	\$20,000.00
MM Building	\$0.00
EMS Aid	\$69,432.07
<b>Total:</b>	<b>\$199,432.07</b>

**2024 CALL REPORT**

Name	Total Calls
Bambenek, Shaelyn	36
Brown, Cindy	1
Chamberlin, Grace	0
Corey, Crystal	39
Dahl, Kelly	52
Duncanson, Ross	53
Essig, Elanda	5
Essig, Matt	24
Franzen, Adam	37
Franzen, Randy	22
Fredberg, Erik	31
Guenther, James	15
Haag, Carter	12
Haag, Connor	19
Hammann, Joelle	19
Hedlund, Nathan	24
Jones, Brent	41
Jonsgaard, Scott	90
Kramer, Katherine	1
Kronebusch, Elizabeth	16
Loftus, Kenny	0
Melbostad, Dion	25
Mote, Alan	19
Murphy, Madeline	16
Nelson, Charayah	73
Nelson, Timothy	57
Patel, Aheli	4
Peterson, Jeffrey	43
Randall, Lindsay	2
Russell, Rachel	14
Schell, Miranda	39
Smith, Jacob	25
Sonsalla, Kelly	9
Sula, Tom	53
Warren, Jacob	4
Wirt, Elizabeth	25

**2024 "On Call Hours"**

Name	Total "On-Call" Hours
Bambenek, Shaelyn	1263.5
Brown, Cindy	12
Chamberlin, Grace	10
Corey, Crystal	1205
Dahl, Kelly	1408
Duncanson, Ross	1272
Essig, Elanda	146
Essig, Matt	371.5
Franzen, Adam	870.5
Franzen, Randy	706
Fredberg, Erik	723
Guenther, James	472
Haag, Carter	368.5
Haag, Connor	486
Hammann, Joelle	460
Hedlund, Nathan	690.5
Jones, Brent	1135.5
Jonsgaard, Scott	1564
Kramer, Katherine	30
Kronebusch, Elizabeth	520.5
Loftus, Kenny	0
Melbostad, Dion	633
Mote, Alan	648.5
Murphy, Madeline	346
Nelson, Charayah	1554.5
Nelson, Timothy	1428
Patel, Aheli	77
Peterson, Jeffrey	1355.5
Randall, Lindsay	62
Russell, Rachel	474.5
Schell, Miranda	735.5
Smith, Jacob	519.5
Sonsalla, Kelly	406
Sula, Tom	1442.5
Warren, Jacob	98
Wirt, Elizabeth	739

SC Primary  
Active Reserve

SC Primary  
Active Reserve

Resigned 5/1/24

**2024 TOTAL INCIDENTS: 334**

**2024 TOTAL ON CALL COVERAGE: 24,234 HOURS**

2025 LEWISTON AMBULANCE ROSTER

Name	Title	Residency
Bambenek, Shaelyn	EMT	Lewiston
Chamberlin, Grace	EMT/DRIVER (PA)	Out of Town
Corey, Crystal	EMT/DRIVER	Lewiston
Dahl, Kelly	EMT/DRIVER	Lewiston
Duncanson, Ross	EMT/DRIVER	Lewiston
Essig, Elanda	EMT (RN)	Lewiston
Essig, Matt	EMT/Ambulance Director	Lewiston
Franzen, Adam	EMT/DRIVER	Lewiston
Franzen, Randy	EMR/DRIVER	Lewiston
Fredberg, Erik	EMT/DRIVER	Out of Town
Green-Kronebusch, Elizabeth	EMT (RN)	Lewiston
Guenther, James	EMT	Lewiston
Haag, Carter	EMR/DRIVER	Lewiston
Haag, Connor	EMT/DRIVER	Lewiston
Hammann, Joelle	EMT	Lewiston
Hedlund, Nathan	EMT/Assistant Director	Lewiston
Jones, Brent	EMT/DRIVER	Lewiston
Jonsgaard, Scott	EMT/DRIVER	Lewiston
Loftus, Kenny	EMR/DRIVER	Out of Town
Melbostad, Dion	EMT/DRIVER	Lewiston
Mote, Alan	EMT/DRIVER	Lewiston
Murphy, Madeline	EMT	Out of Town
Nelson, Charayah	EMT/DRIVER	Lewiston
Nelson, Tim	EMR/DRIVER	Lewiston
Patel, Aheli	EMT	Out of Town
Peterson, Jeff	EMT/DRIVER	Lewiston
Russell, Rachel	EMT/DRIVER	Out of Town
Schell, Miranda	PARAMEDIC/DRIVER	Lewiston
Smith, Jacob	EMT/DRIVER	Lewiston
Sonsalla, Kelly	EMT/DRIVER	Out of Town
Sula, Tom	EMT/DRIVER	Lewiston
Warren, Jake	EMT/DRIVER	Out of Town
Wirt, Elizabeth	EMT/DRIVER (RN)	Lewiston

**28- EMT's, 4- EMR's, 1-PARAMEDIC**

**Total Members-33**



## **2025 Ambulance Board of Director's**



Medical Director- Dr. Dennis Laudon (Standing position)

Ambulance Director- Matt Essig (Standing position)

Assistant Ambulance Director- Nathan Hedlund (Term runs 1/31/25 to 1/31/27)

Training Officer- Brent Jones (Term runs 1/31/24 to 1/31/26)

Financial Officer- Kelly Sonsalla (Term runs 1/31/24 to 1/31/26)

Membership Liaison- Charayah Nelson (Term runs 1/31/25 to 1/31/27)

Membership Liaison- Adam Franzen (Term runs 1/31/24 to 1/31/26)

Council Liaison- Marc Potter (2025)

The Ambulance Board meets on a regular basis to conduct the business of the service and make recommendations to the Lewiston City Council.